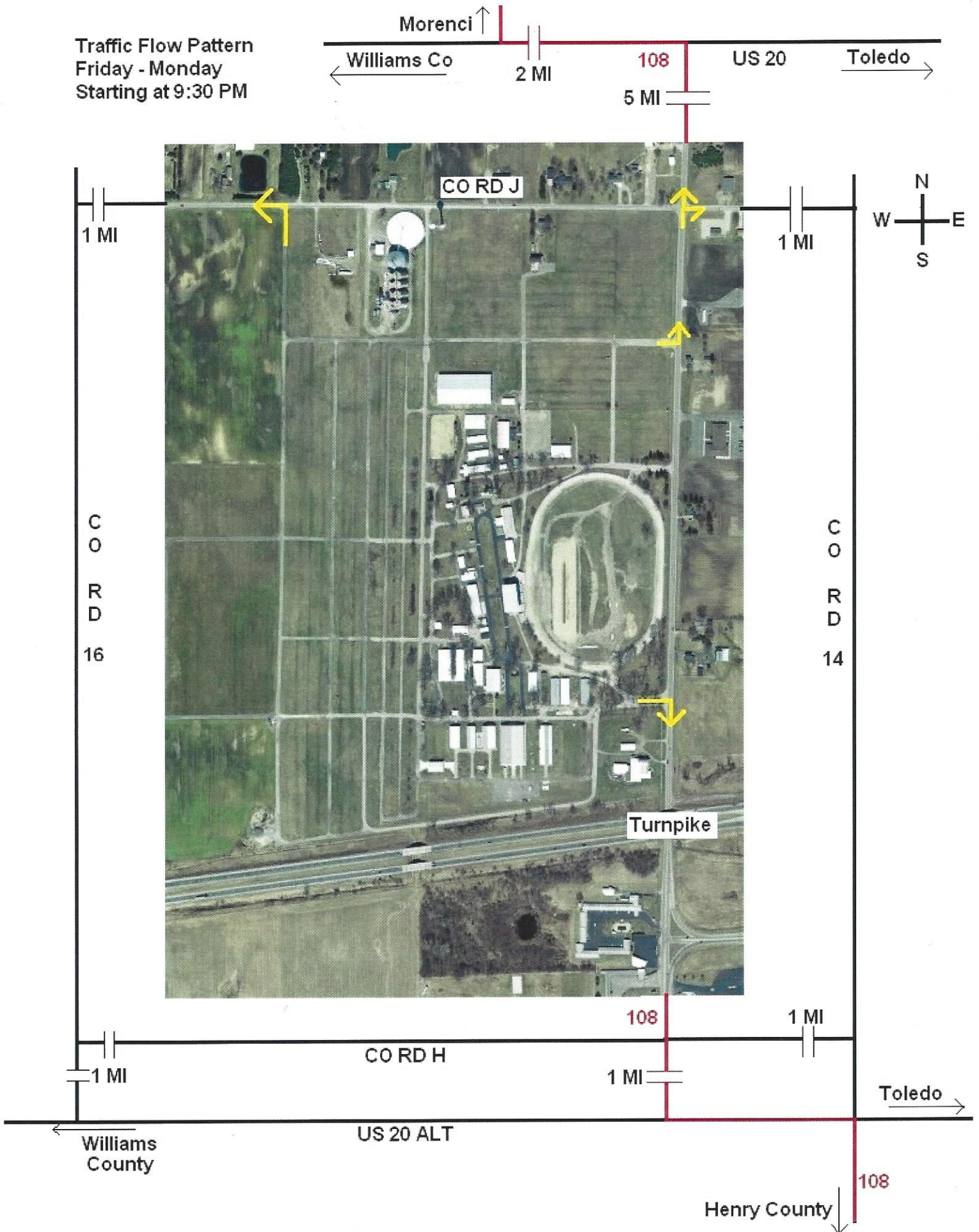


Traffic Flow Pattern
Friday - Monday
Starting at 9:30 PM



Alternative Routes Leaving the Fairgrounds

9:30 p.m. Traffic Flow – Friday thru Monday

GATE J

Turnpike westbound – west on Co Rd J to Co Rd 20 – south on Co Rd 20 to US 20A – west on US 20A to SR 66 – north on SR 66 to Turnpike entrance

Williams County – west on Co Rd J to Co Rd 20 – south on Co Rd 20 to US 20A – west on US 20A

Turnpike eastbound - west on Co Rd J to Co Rd 16 – south on Co Rd 16 to US 20A – east on US 20A to SR 109 – north on SR 109 to Turnpike entrance

Henry County – west on Co Rd J to Co Rd 16 - south on Co Rd 16 to US 20A - east on US 20A to SR108 (N. Shoop Ave) – south on SR 108 (N. Shoop Ave)

Lucas County – Toledo - west on Co Rd J to Co Rd 16 – north of Co Rd 16 to US 20 (Central) east on US 20 (Central)

Lucas County – Toledo - west on Co Rd J to Co Rd 16 - south on Co Rd 16 to US 20A - east on US 20A (Airport Hwy)

Morenci – west on Co Rd J to Co Rd 16 – north on Co Rd 16 to US 20 – west on US 20 to SR 108 – north on SR 108

North Gate

Turnpike eastbound – north on SR 108 to Co Rd J – east on Co Rd J to SR 109 – south on SR 109 to Turnpike entrance

Turnpike westbound – north on SR 108 to Co Rd J – east on Co Rd J to Co Rd 14 – south on Co Rd 14 to Co Rd H – west on Co Rd H to SR 108 – north on SR 108 to Turnpike entrance

Lucas County – Toledo – US 20 (Central) – north on SR 108 to US 20 (Central) – east on US 20

Lucas County – Toledo – US 20A (Airport Hwy) – north on SR 108 – east on Co Rd J to SR 109 – south on SR 109 to US 20A (Airport Hwy) – east on US 20A (Airport Hwy)

Morenci – north on SR 108 to US 20 – west on US 20 to SR 108 – north on SR 108

Williams County – north on SR 108 to US 20 – west on US 20 or north on SR 108 to Co Rd J – east on Co Rd J to Co Rd 14 – south on Co Rd 14 to US 20A – west on US 20A

Henry County – north on SR 108 to Co Rd J – east on Co Rd J to Co Rd 14 – south on CR 14 and changes to SR 108 (N. Shoop Ave)

South Gate

Turnpike eastbound and westbound – south on SR 108 to Turnpike entrance

Morenci – south on SR 108 to Co Rd H – east on Co Rd H to Co Rd 14 – north on Co Rd 14 to Co Rd L – west on Co Rd L to SR 108 – north on SR 108 to US 20 – west on US 20 to SR 108 – north on SR 108

Lucas County – Toledo – south SR 108 to US 20A (Airport Hwy) – east on US 20A (Airport Hwy) to US 20 (Central) turn north on SR 109

Williams County – south on SR 108 to US 20A – west on US 20A

Henry County – south on SR 108 to US 20A – east on US 20A to SR 108 (N. Shoop Ave) – south SR 108 (N. Shoop Ave)